

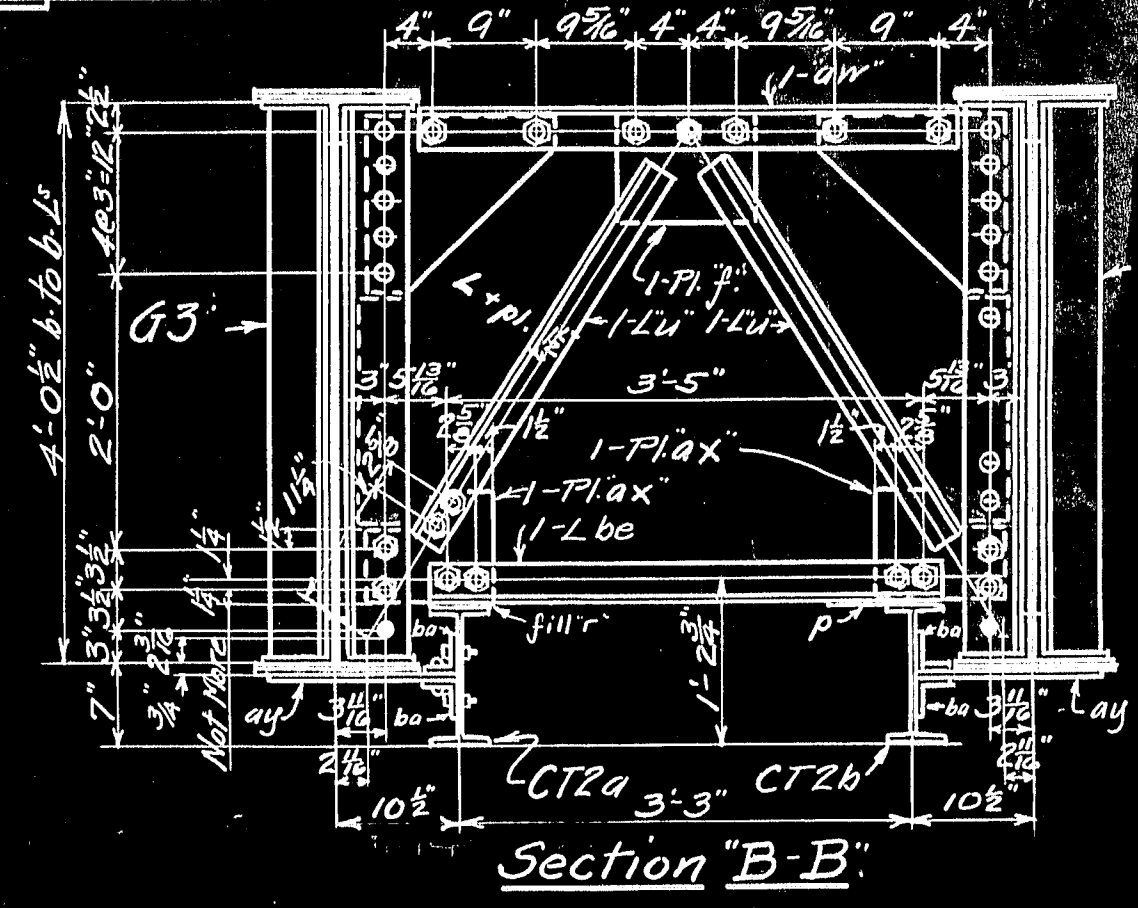
Bill of Material

Bill of Material																												
No.	Mark	Description	Length	No.	Mark	Description	Length	No.	Mark	Description	Length	No.	Mark	Description	Length	No.	Mark	Description	Length									
1	G3a	48" x 6" x 1/2" Approach Girder	31'-8"	*	1	t	3" x 4" Fl.	10'-8"	*	1	av	3" x 3" x 1/2" L	3'-11 1/2"	*	60	bu	3" x 3" x 1/2" L	1'-3 1/2"	F.E.	*	2	cv	2 1/2" x 1/2" Fls.	1'-9 1/2"	Bored	9 1/2"		
1	G3a	do	31'-8"	*	12	u	3" x 3" x 1/2" L	3'-2 1/2"	*	2	ax	10 1/2" x 4" Fls.	11'-2"	*	11	bu	3" x 3" x 1/2" L	5'-10 1/2"	*	2	3" Pin 10 1/2" grip	1'-1 3/8"	1	13 1/2"	1'-1 3/8"			
1	CT2a	12" I 31.8"	26'-0"	*	4	v	4" x 3 1/2" x 1/2" L	3'-8"	*	24	ay	7 1/2" x 7 1/2" Fls.	1'-3 1/2"	*	104	bu	11" x 4" Fls.	1'-0 1/4"	T.J. 10 1/2"	1	3" Pin 6 1/2" grip	5 3/4"	1	13 1/2"	5 3/4"			
1	CT2b	do	26'-0"	*	1	w	4" x 3 1/2" x 1/2" L	3'-8"	*	36	ba	3" x 3" x 1/2" L	6"	*	6	bu	3" x 3" x 1/2" L	6'-10 3/4"	ITZ	3	3" x 3" x 1/2" L	3 1/2"	3	3" x 3" x 1/2" L	3 1/2"			
1	CT2c	do	26'-0"	*	2	x	10 1/2" x 4" Fls.	11 1/2"	T	4	bb	3" x 3" x 1/2" L	7 1/2"	*	1	cw	2 1/2" x 1/2" Fl.	7'-2 1/4"	*	1	bu	15" L 33.9"	10'-7 1/2"	1	UB30 3 sheave block	3 1/2"		
1	CT2d	do	26'-0"	*	8	y	11 1/2" x 4" Fls.	12 1/2"	T	4	bc	3" x 3" x 1/2" L	7 1/2"	*	2	h/2	15" L 33.9"	10'-7 1/2"	1	up	1	LB30 3	3	1	LB30 3	3		
1	CT2e	do	24'-9"	*	4	da	3" x 3" x 1/2" L	3'-11 1/2"	T	4	bd	3" x 3" x 1/2" L	7 1/2"	*	2	8	8" x 8" wooden blocks	1'-3"	1	mailing	1	FB30 4	4	1	FB30 4	4		
1	CT2f	do	24'-9"	*	8	ab	9" x 4" Fl.	11"	T	4	24	24" sheave 2 1/2" hub	2' x 7 1/2"	*	4	cc	3" x 3" x 1/2" L	3'-8 1/2"	1	ETTS	4	1	ETTS	4	1	ETTS	4	
2	C16	21" C.I. 104"	8'-1 1/2"	Δ	1	ac	6" x 6" x 1/2" L	6'-8"	Ship loose	1	20	20" x 2 1/2" x 1/2" L	2' x 2"	*	4	cd	3" x 3" x 1/2" L	1'-1"	1	4	cx	6" x 4" Fls.	7 1/2"	1	FB30 4	4		
2	a	8" L 10.25"	6'-9 1/2"	2	ad	3" x 3 1/2" x 1/2" L	2'-3"	1	16	16" x 2" x 1/2" L	13 1/2"	2	2	2" Fls 3 1/2" x 2 1/2" x 1/2" L	5 1/2"	1	ce	12" L 20.7"	2'-2"	2	dy	3" x 3" x 1/2" L	9 3/4"	2	dx	4" x 4" x 1/2" L	11 1/2"	
1	b	12" L 20.7"	6'-9 1/2"	2	ae	6" x 3 1/2" x 1/2" L	5 1/2"	2	2	2" Fls 3 1/2" x 2 1/2" x 1/2" L	5 1/2"	2	1	3" x 3" Pin 3 1/2" x 3 1/2" x 1/2" L	5 1/2"	4	cf	18" x 3" x 1/2" L	1'-9 3/4"	2	dw	3" x 3" x 1/2" L	1 1/8"	2	dv	3" x 3" x 1/2" L	1 1/8"	
2	ca	4" x 3 1/2" x 1/2" L	3'-1 1/4"	2	af	15 1/2" x 4" Fls.	1'-7 1/4"	1	1 1/2	1 1/2" x 3 1/2" x 1/2" L	5 1/2"	2	4	cg	4" x 3" x 1/2" L	8 1/4"	1	ch	8" x 3" x 1/2" L	1'-7 1/2"	4	du	3" x 3" x 1/2" L	1'-7 1/2"	4	ds	9" x 4" Fls.	11 1/2"
2	da	4" x 3 1/2" x 1/2" L	3'-1 1/4"	2	ag	8" x 6" x 1/2" L	1'-4 1/2"	2	3	3" x 2 3/4" wooden blocks	8 1/2"	2	2	3" x 2 3/4" wooden blocks	8 1/2"	2	ci	10 1/2" L 15.3"	7'-2 1/2"	4	dt	7" x 3" x 1/2" L	9 1/4"	4	dt	7" x 3" x 1/2" L	9 1/4"	
2	ea	3" x 3 1/2" x 1/2" L	3'-0 1/2"	2	ah	12" L 25"	3'-0 1/2"	1	1	1" x 7 1/2" x 1/2" L	1'-7 1/2"	1	1	1" x 7 1/2" x 1/2" L	1'-7 1/2"	1	cm	7 1/2" x 3" x 1/2" L	11"	20	TOB 1 1/2" turned bolt 1 1/2" x 1 1/2"	2 1/2"	10	TOB 1 1/2" turned bolt 1 1/2" x 1 1/2"	2 1/2"			
6	f	9 1/2" x 1/2" Fls.	11"	2	ai	5" x 3" x 1/2" L	1'-7 1/2"	1	3	3" x 3" Pin 3 1/2" x 3 1/2" x 1/2" L	5 1/2"	2	4	bp	3 1/2" x 3 1/2" x 1/2" L	1'-7 1/2"	2	cn	10 1/2" x 4" Fls.	10 1/2"	10	TOB 1 1/2" turned bolt 1 1/2" x 1 1/2"	2 1/2"	10	TOB 1 1/2" turned bolt 1 1/2" x 1 1/2"	2 1/2"		
28	g	3" x 3" x 1/2" L	3'-1 1/4"	2	aj	4" x 4" x 1/2" L	11 1/2"	1	be	4" x 3 1/2" x 1/2" L	3'-8"	12	6	bp	3 1/2" x 3 1/2" x 1/2" L	1'-7 1/2"	2	co	11 1/2" x 4" Fls.	1'-6 1/2"	10	TOB 1 1/2" turned bolt 1 1/2" x 1 1/2"	2 1/2"	10	TOB 1 1/2" turned bolt 1 1/2" x 1 1/2"	2 1/2"		
8	h	3" x 3" x 1/2" L	3'-3 1/2"	2	ak	7 1/2" x 3" Fls.	6'-7 1/4"	14	dv	7 1/2" x 3" Fls.	2'-5 1/2"	1	6	bs	8 1/2" x 1" Fl.	11"	2	cr	5" x 3" x 1/2" L	2'-2"	10	TOB 1 1/2" turned bolt 1 1/2" x 1 1/2"	2 1/2"	10	TOB 1 1/2" turned bolt 1 1/2" x 1 1/2"	2 1/2"		
19	i	8" x 4" Fls.	10"	2	al	7 1/2" x 4" Fls.	1'-9 1/4"	94	94	94" bolts	1 1/2"	1	6	bs	8 1/2" x 1" Fl.	11"	2	cs	5" x 1/2" Fl.	5"	12	TOB 1 1/2" turned bolt 1 1/2" x 1 1/2"	2 1/2"	12	TOB 1 1/2" turned bolt 1 1/2" x 1 1/2"	2 1/2"		
7	m	8" x 4" Fls.	10"	1	ar	9" x 4" Fls.	1'-9 1/4"	20	20	20" bolts	2"	12	6	bs	8 1/2" x 1" Fl.	11"	2	ct	8 1/2" x 3/4" Fls.	1'-8 1/2"	20	2 1/2" x 1/2" Washers	1 1/2" hole	20	2 1/2" x 1/2" Washers	1 1/2" hole		
2	n	8" x 4" Fls.	10"	1	as	9" x 4" Fl.	1'-9 1/4"	114	114	114" bolts	1 1/2"	2	6	bs	8 1/2" x 1" Fl.	11"	2	cu	5 1/2" x 1" Fls.	1'-3"	42	2 1/2" x 1/2" "	1 1/2" hole	42	2 1/2" x 1/2" "	1 1/2" hole		
4	p	10 1/2" x 4" Fls.	1'-4 1/2"	1	at	8" x 4" Fl.	9'-0"	140	140	140" bolts	1 1/2"	2	6	bs	8 1/2" x 1" Fl.	11"	2	cu	5 1/2" x 1" Fls.	1'-3"	42	2 1/2" x 1/2" "	1 1/2" hole	42	2 1/2" x 1/2" "	1 1/2" hole		
6	r	3" x 4" Fls.	5"	1	au	3" x 3" x 1/2" L	3'-11 1/2"	53	53	53" bolts	2"	2	6	bs	8 1/2" x 1" Fl.	11"	2	cu	5 1/2" x 1" Fls.	1'-3"	42	2 1/2" x 1/2" "	1 1/2" hole	42	2 1/2" x 1/2" "	1 1/2" hole		
1	s	9 1/2" x 4" Fl.	10 1/2"	1	av	8" x 4" Fl.	11 1/4"																					



General Notes:
 Paint beams, plates and angles one coat of black.
 New holes in flanges of beams CT1 and CT2 are to be 1/2" except as noted.
 All other holes 1/2".
 Edge distances to sheared edges not given are 1 1/2".
 Pins marked thus (*) in Bill of Material are to be bolted together to make the Traveler Body. Marked T.T.I.
 Pins marked thus (Δ) in Bill of Material are to be bolted and riveted together to make Plungers. Marked C.I.
 Holes for turned bolts to be drilled to template.

- Wanted:**
- 1- Traveler Body (Girds G3E) Marked T.T.I.
 - 1- " Head " T.T.2
 - 1- " Frame " T.T.3
 - 4- " Links " T.T.4
 - 1- Triangular Plate Attachment " T.T.10
 - 1- Traveler Rear Frame " T.T.11
 - 2- Plungers " C.I.6
 - 1- Angle " ac
 - 2- Angles (with ac & bolted fast) " ad & ag
 - 2- " " ag & ah



Upper Portion of Traveler for Erecting Towers.
 P.W.A. Project No. Me 1010D.
 Deer Isle Sedgwick Bridge District.
 Bridge over Eggemoogin Reach
 from Little Deer Isle to Sedgwick
 Hancock County, Maine.
 Robinson & Steinman Engineers, New York City
 The Phoenix Bridge Co.
 Erection Dept.
 Engr. R.S. Foulds.
 Draftsman: Frank W. Peirce.
 Scale: 3/4" = 1'-0"
 Date: 3/10/38
 Supt. of Erection. C.O. 457. Dwg. T3B.

